

Anti-H_CEACAM1(CD66a) hIgG4 Antibody(MK-6018)

Product Information

GM-30164AB-10	10 µg
GM-30164AB-100	100 µg
GM-30164AB-1000	1 mg

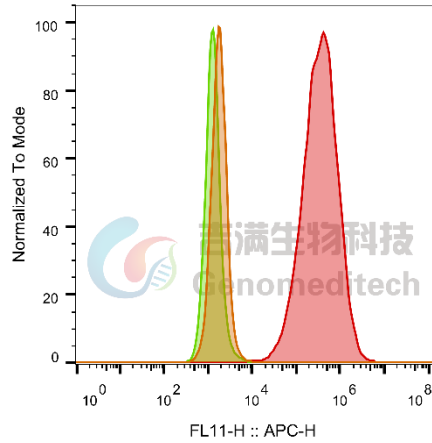
Antibody Information

Species Reactivity	Human
Specificity	Detects human CEACAM1.
Source/Isotype	Monoclonal human IgG4, κ
Other Names	BGP, BGP1, BGPI
Gene ID	634(human)
Application	Flow cytometry: 0.5 µg-2 µg /test; FC-Quality tested
Background	Carcinoembryonic antigen-related cell adhesion molecule 1 (CEACAM1) is a member of the CEA family of highly glycosylated cellular adhesion molecules, which belongs to the immunoglobulin superfamily. CEA proteins are built from a highly conserved modular set of N-terminal variable-like and constant-like immunoglobulin domains that mediate cis or trans homophilic or heterophilic adhesion. Amongst other members of the CEA family, human CEACAM1 gene undergoes the most extensive alternative splicing, giving rise to 12 splice variants. CEACAM1 is expressed on epithelia, endothelia and leukocytes, but is absent from skeletal muscle myocytes and cartilage. The protein is both structurally and functionally conserved in humans and rodents and shares the same tissue expression pattern.
Storage	Store at +4°C short term (1-2 weeks). Store at -20°C long term
Formulation	Phosphate-buffered solution, pH 7.2.

Data Examples

Flow cytometry

H_CEACAM1(CD66a) CHO-K1 Cell Line (Catalog # GM-C19187) was stained with Anti-H_CEACAM1(CD66a) hlgG4 Antibody (Catalog # GM-30164AB) or isotype control antibody, followed by anti-Human IgG APC-conjugated Secondary Antibody.



SampleID	Geometric Mean : FL11-H
CHO-K1 anti-CEACAM1+APC-2nd Ab	1803
CHO-K1 H_CEACAM1 H_IgG+APC-2nd Ab	1322
CHO-K1 H_CEACAM1 anti-CEACAM1+APC-2nd Ab	337744